



# THE RUTHMAN COMPANIES

## REPORTER

APRIL 2013

THE MONTHLY SOURCE FOR RUTHMAN COMPANIES EVENTS AND INFORMATION

### New DIN Pumps

#### *Closed Coupled Horizontals with One-Piece Shaft...*

Gusher recently completed an order in collaboration with Ruthmann Pumpen of Germany and Birmingham Pump Supply of the UK for 21 DIN pumps. They will be used at the Jaguar Factory in England. All engineering, construction testing and assembly were done at the Gusher Dry Ridge and Williamstown locations.



**Congratulations and**

**THANK YOU**

**PMW**

**FOR 30 YEARS**

**of Pumping with Gusher.**



### Precision Metal Works

#### *A 30th Birthday and Partnership...*

Gusher congratulates Precision Metal Works on 30 years of success and growth. Gusher has had a great partnership with PMW since their beginning, and ran a congratulatory ad in their home town Maquoketa Sentinel-Press publication.



## News from Nagle

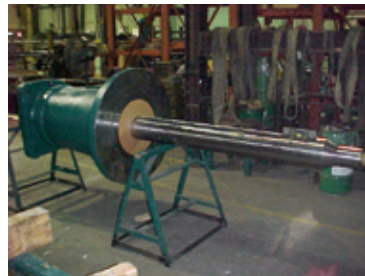
### *Sporting a new look...*

Visit the new, vastly improved Nagle website at <http://www.naglepumps.com>



### *A Green Monster...*

A recent pump shipped to Mittal Steel has the largest bearing assembly built by Nagle and offers a 7'0" setting and utilizes a cradle mount to add another 18"... All of this with no bearings below the sump cover. The pump weighs in at a whopping 7 tons!



### *Nagle Molten Salt Cantilever...*

Fraunhofer Institute in Germany has just purchased a Nagle Vertical Cantilever pump, which will be used for research and development in the solar power industry. This pump will pump molten salt at a temperature of almost 1000° F. Material of construction is inconel. Fraunhofer Institute joins the University of Wisconsin and Ohio State University who are already using the Nagle Cantilever pump for molten salt work.

### *AISTech Steel Show...*

Nagle will be displaying its Vertical Cantilever Pump in Pittsburgh at the AISTech Iron and Steel Technology show, May 6 to 9, 2013. Look for Nagle in a shared booth with Hydro-Aire.

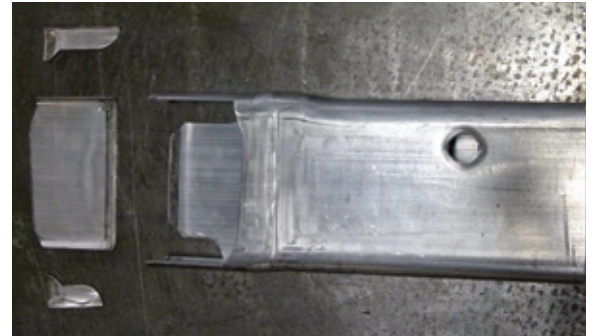
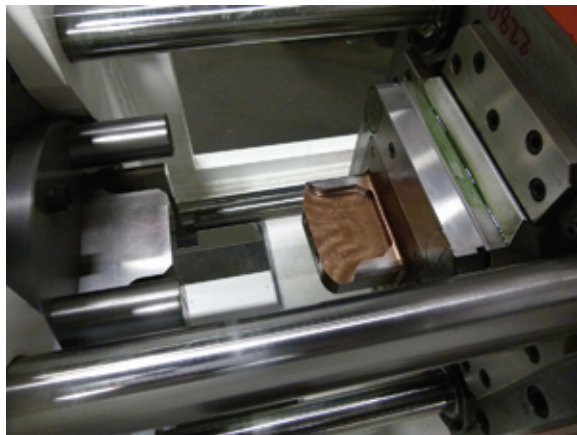




## Hydroform Tube Trimming System

*Ready to ship...*

Another look at the Vulcan Hydroform Tube Trimmer order before shipment to Ford. These machines will be forming and trimming the new all aluminum chassis parts for the 2015 model F-150 trucks.



These frame pieces were perfectly cut and trimmed in a single operation.

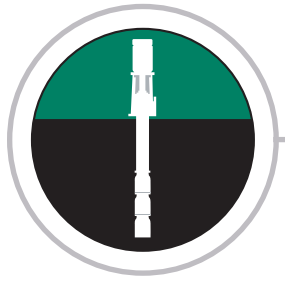


## New GSP Employee

*Chris Hayter...*

Welcome Chris Hayter who recently joined Great Southern Pump, a Ruthman Company. He was training both at Gusher Pumps and Great Lakes Pump & Supply Company. Chris will be joining Scott Thurrott who heads Great Southern Pump, located in New Smyrna Beach, Florida. They recently booked a \$400K order for Vertical Turbine Pumps, shipping to Polk County, Imperial Lake Water Treatment Plant in Lakeland Florida.

*Congratulations, Chris and Welcome to our Team!*



**Process Systems, inc.**  
A RUTHMAN COMPANY

## More Green Giants

*PSI goes underground...*



Dan Torongo shares pictures of an installation of a 25 foot tall Process Systems 500HP- 450 PSI self seal split turbine pump that was installed 1/4 mile underground at Doe Run lead mine in the Mark Twain National Forest, located in the southern half of Missouri. PSI now has 7 running there. These pumps are used for dewatering and run 24 hours nonstop.



## From The 84 Group

### *Boosting Rice Energy with Gusher...*

Dave Polcha sends photos of a water pressure booster station for Rice Energy servicing The Marcellus Shale Gas Drilling Market in Western Pa. The 84 Group Inc. in conjunction with Somerset Steel & Erection Co. have provided two Gusher Pumps with 50 hp & 100 hp, 3600 rpm motors to boost incoming water pressure from 60 & 150 to 250 psi. A shipping container was converted into a complete Pumping Station. Automated with VFD's and SCADA communication system allowing the pumps to be controlled and monitored from other locations. The complete system will be delivered to a drilling site in one shipment ready for electrical and piping hook ups.

This is The 84 Group's second Marcellus Shale Project with Rice Energy using Gusher Pumps



Pictured from left to right: Somerset Steel, Brian Stevanus, Don Walker. The 84 Group Inc. Dave Polcha. JB Industrial Services, Nick Polcha, Rice Energy, Ryan Kanto, Glen King.





## Gusher and Barton Distilleries

*Let it Flow.*

Gary Smith has been making frequent trips to historic Barton Distilleries of Bardstown Kentucky (strictly business, of course) and reports the Gusher pumps installed there perform flawlessly, keeping the Maker's Mark, 1792 RR, and other fine products flowing 24/7.



## Ruthman Companies Videos

*Check out the new posting on the "ruthmanco" YouTube site, featuring a new Vulcan Tube Cutter Video*



Ruthman Companies uploaded a video 1 week ago



### Vulcan/Brehm® Tube Cutter

14 views

See the most recently manufactured Vulcan/Brehm® Tube Cutting machine passing its final rigorous testing stages at Vulcan Tool before shipment.

## Once Again, Please Keep Us Posted....

Please help us all stay informed. Send us your information about your organization's events, photos, videos products and people for future monthly Ruthman Reporter issues to...

*Jim...ruthmanmarket@gmail.com>or Karen...ktomlin@gusher.com*